

# Partnering with Schools and Universities



**Partnerships in NRM  
PROSPECT Course**

*"The views, opinions and findings contained in this report are those of the authors(s) and should not be construed as an official Department of the Army position, policy or decision, unless so designated by other official documentation."*



**US Army Corps  
of Engineers®**



# Why Partner with Educational Institutes?

- Involvement with local universities and schools is a natural fit with the Corps' increasing emphasis on environmental stewardship and STEM.
- A good program can foster ownership of the project, which is beneficial when seeking community support.
- The easiest way to reach an adult is through the experiences of their children. Don't forget these programs have the ability to drive visitation from these contacts.
- Think outside the box: graphic design, environmental studies, event planning, recreation, biological sciences, engineering, architecture
- Give them the opportunity to say yes.



US Army Corps  
of Engineers®



# Job/Intern Fairs

These are an easy way to begin interaction with your local university.



- Recruit volunteers
- Educate
- Establish an agency presence
- Establish relationships



US Army Corps  
of Engineers®



# Where Preparation Meets Opportunity!



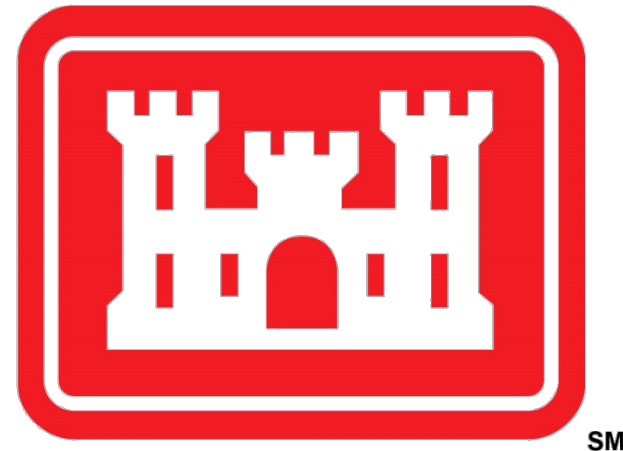
US Army Corps  
of Engineers®



# Guest Speaker for Intro to Rec Classes

The Athletic Department is a great way to promote water safety but the Recreation Department is your best way to get direct student interaction at your lake project.

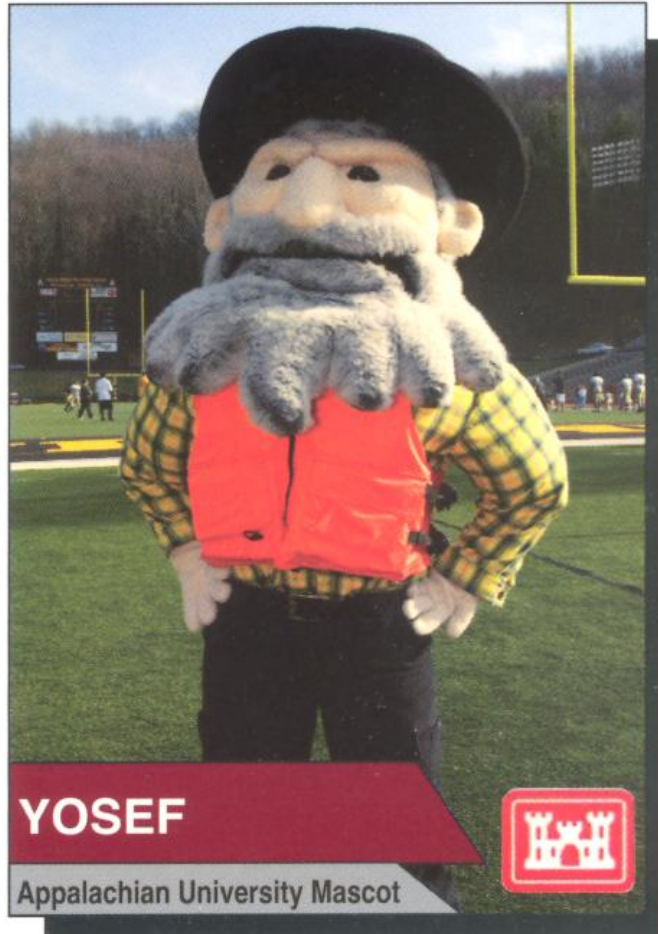
- Educate
- Establish an agency presence
- Recruit
- Develop relationships



US Army Corps  
of Engineers®



# Case Study: W. Kerr Scott Lake & ASU



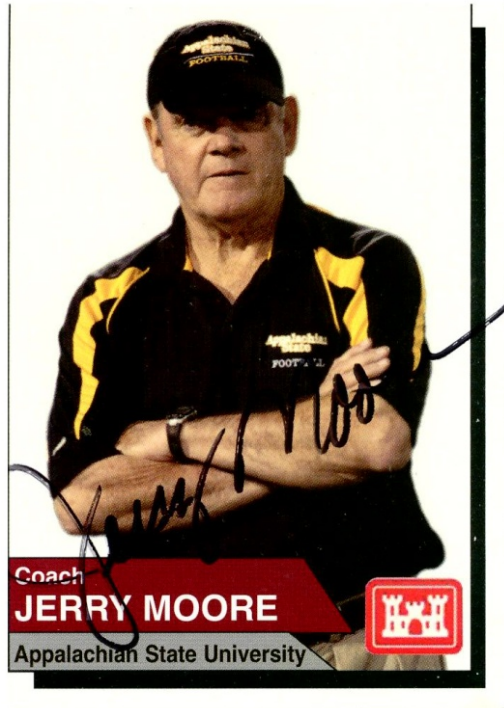
- **Make initial school commitment easy**, i.e. “Could we have 10 minutes of your time to take a picture of the mascot in a life jacket? Anytime would work for us.”
- At W. Kerr Scott Reservoir in SAW, Appalachian State University allowed a ranger to come to a practice to get photos and video of players, coach and mascot wearing life jackets and promoting water safety.



US Army Corps  
of Engineers®



# Water Safety Trading Cards



These are popular with kids and are cost effective way to promote water safety (4 cents per card)



US Army Corps  
of Engineers®



# Take Advantage of the Image

Once you have established contact and made a successful interaction, get creative!



Army Corps  
Engineers®

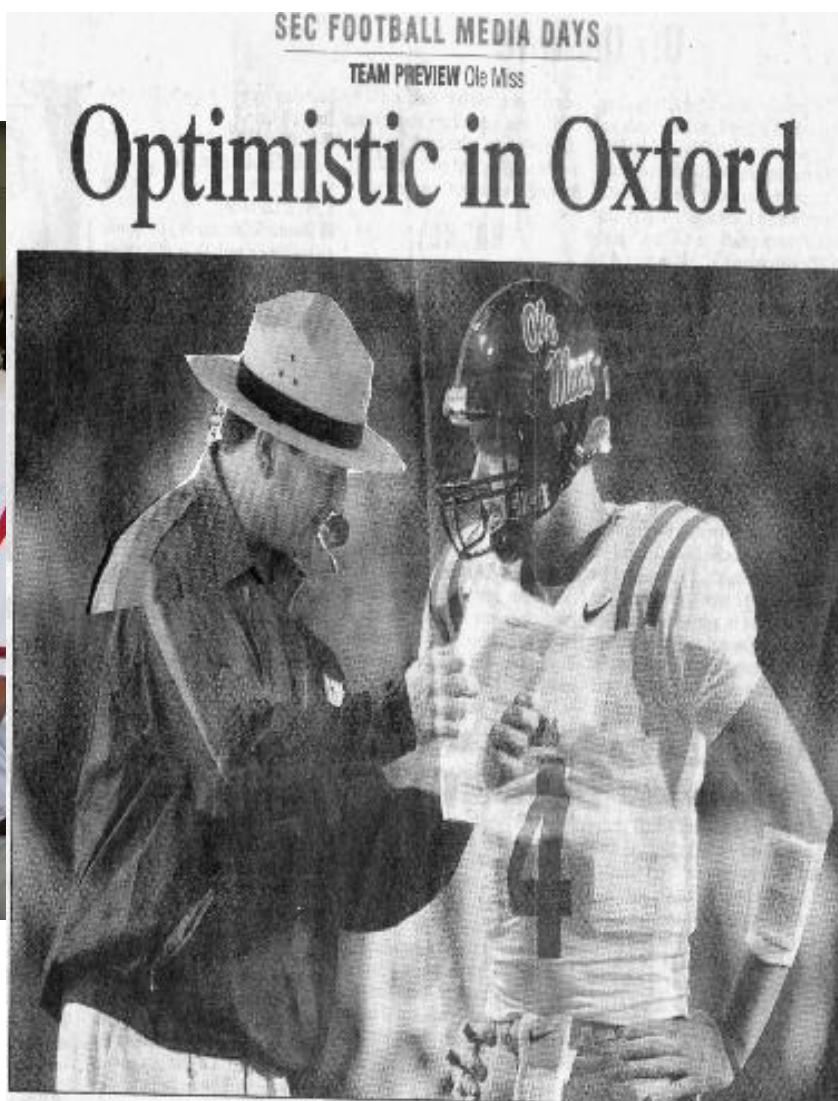




# Lessons Learned



# Just Two Years Later!



West Hill  
Last season, Mississippi Coach ~~Mark Stoops~~ (left) and quarterback Jarrett Streeb rode an early-season victory over eventual national champion Florida to a 9-4 record that included a victory over Texas Tech in the Cotton Bowl. It was Nut's first season with the Rebels.



US Army Corps  
of Engineers®

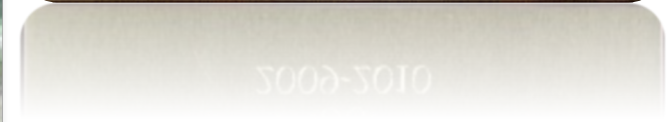


U.S. ARMY

# Volunteer Interns

If you have a good working RELATIONSHIP with a university in proximity to your project, you can recruit volunteer interns.

Students are often required to do internships to fulfill their graduation requirements.



US Army Corps  
of Engineers®



U.S. ARMY

# \*NC State Eagle Cam

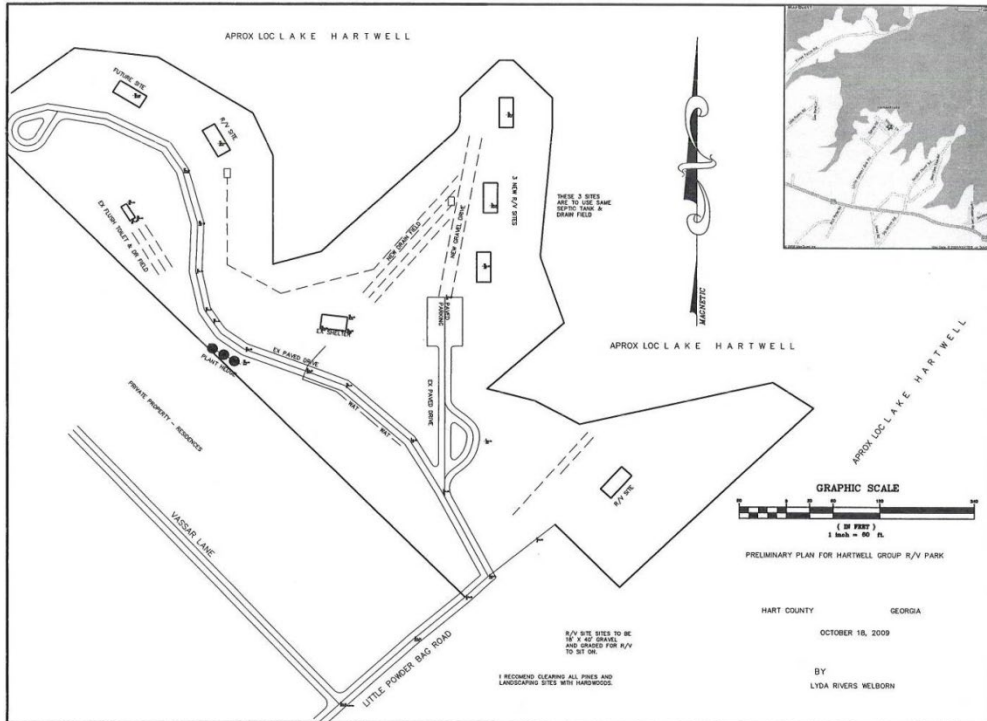
- This project originated when Army Corps of Engineers ranger, Francis Ferrell, led a class of NCSU ornithology students on a visit to an active Jordan Lake Bald Eagle nest in March 2010.
- A team of volunteer engineers, NCSU graduate students, faculty, and staff formed over the next six months.
- Video cameras installed at an active nest in October and began monitoring the breeding pair just before female laid two eggs in early December.



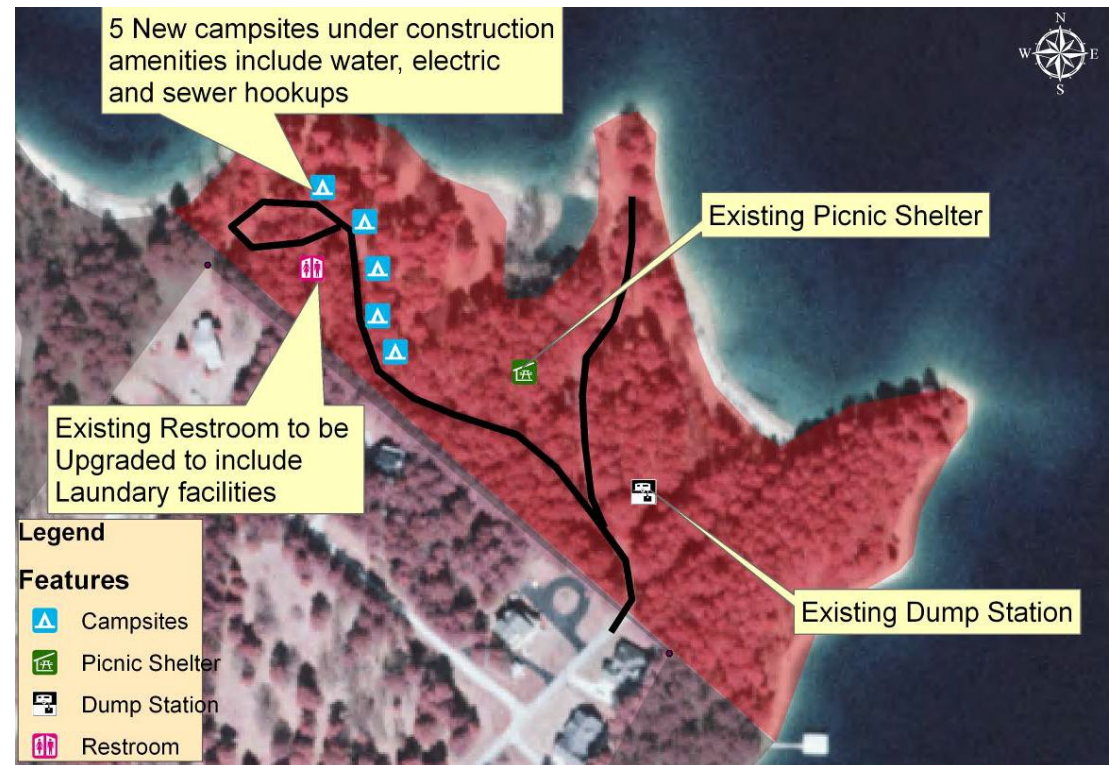
Nest is visible dawn to dusk Eastern Standard Time.

# Clemson University Department Of Parks, Recreation, Tourism

- 2009 MOU with Clemson for facility planning, outreach, data collection, program development



- Student assignment to design a volunteer village
- Winning design implemented at Hartwell



0.00501 0.02 Miles  
1 inch = 0.03 miles



Hartwell Lake Volunteer Village  
Feb 5 2010



Finished product!



# Walla Walla District MOU With WSU



- Issue: Lower Granite- Illia Dunes Recreation area overuse. Popular party area for WSU students resulted in habitat degradation, littering, parking problems, safety concerns
- MOU signed with WSU in 2015 to involve students in addressing the problem and providing volunteer clean-up and restoration of the area



# Juniata College Raystown Field Station



- Lease since 1974 to Juniata to provide opportunities for environmental research and education at Raystown.
- Developed Raystown Conservation Education Partnership
- Led to 2007 Handshake funded challenge partnership agreement for environmental education programming.



US Army Corps  
of Engineers®





# Simonson Biological Field Station Henderson State University

- 7,200 square-foot log structure on 104 acres
- Classrooms and laboratory
- Student dormitory rooms
- Supports HSU faculty research, field based courses, educational outreach, biology club and biology department retreats and events
- Support use consistent with its mission



US Army Corps  
of Engineers®



U.S. ARMY

[https://www.youtube.com/watch?v=OQch\\_VQw6XQ](https://www.youtube.com/watch?v=OQch_VQw6XQ)



Henderson State Biology Creates Fish Habitats



# DeGray Lake Visitor Center Renovation

## Estimate-\$350,000

- Serves as research and resource center
- Maintains archeological records, collections
- Teach anthropology courses and outreach



US Army Corps  
of Engineers®



- Artifacts on loan from the University (free)
- Caddo Village mural- cost of materials only
- Identification labels and labor for display (free)
- Provided historic trivia, loan historical photographs



# Restoring Native Species at Allatoona

- Lake Allatoona has a 10-year plus relationship with Berry College.
- Ranger Terrell Stoves approached a professor at the college about a possible partnership to reintroduce the Mountain Longleaf Pine to Pine Mountain at the project.
- This success led to the expansion of the program 7 years later to include the project as a test site for the introduction of potentially blight resistant American Chestnuts.
- The Professor on the Longleaf Pine project also happened to be the state coordinator for the American Chestnut Foundation with whom the Corps has a National MOU.

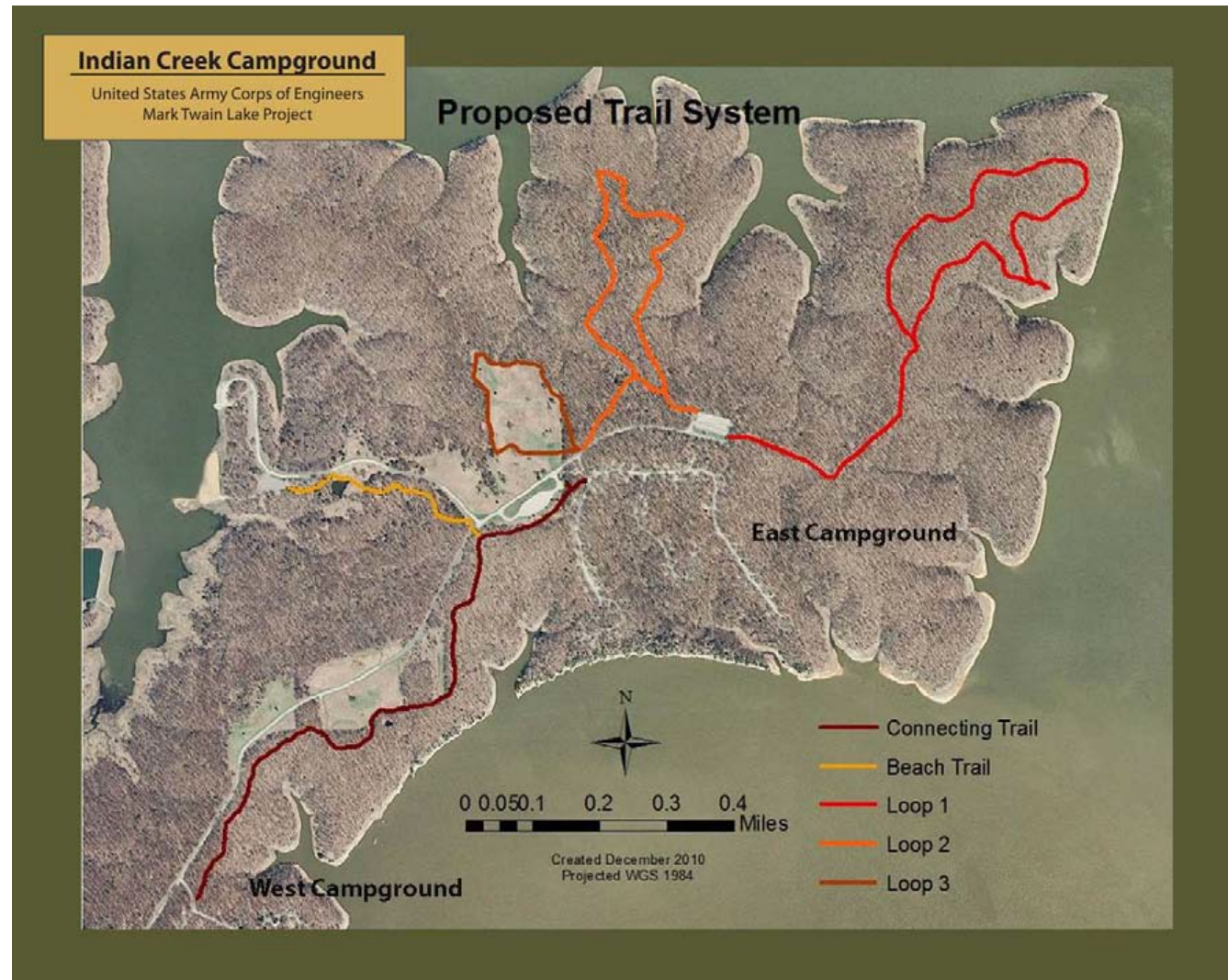


US Army Corps  
of Engineers®



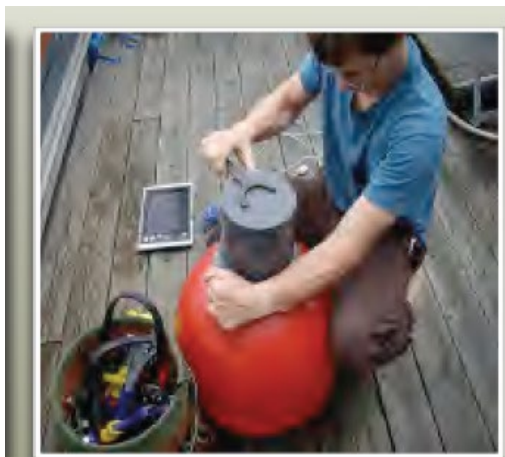
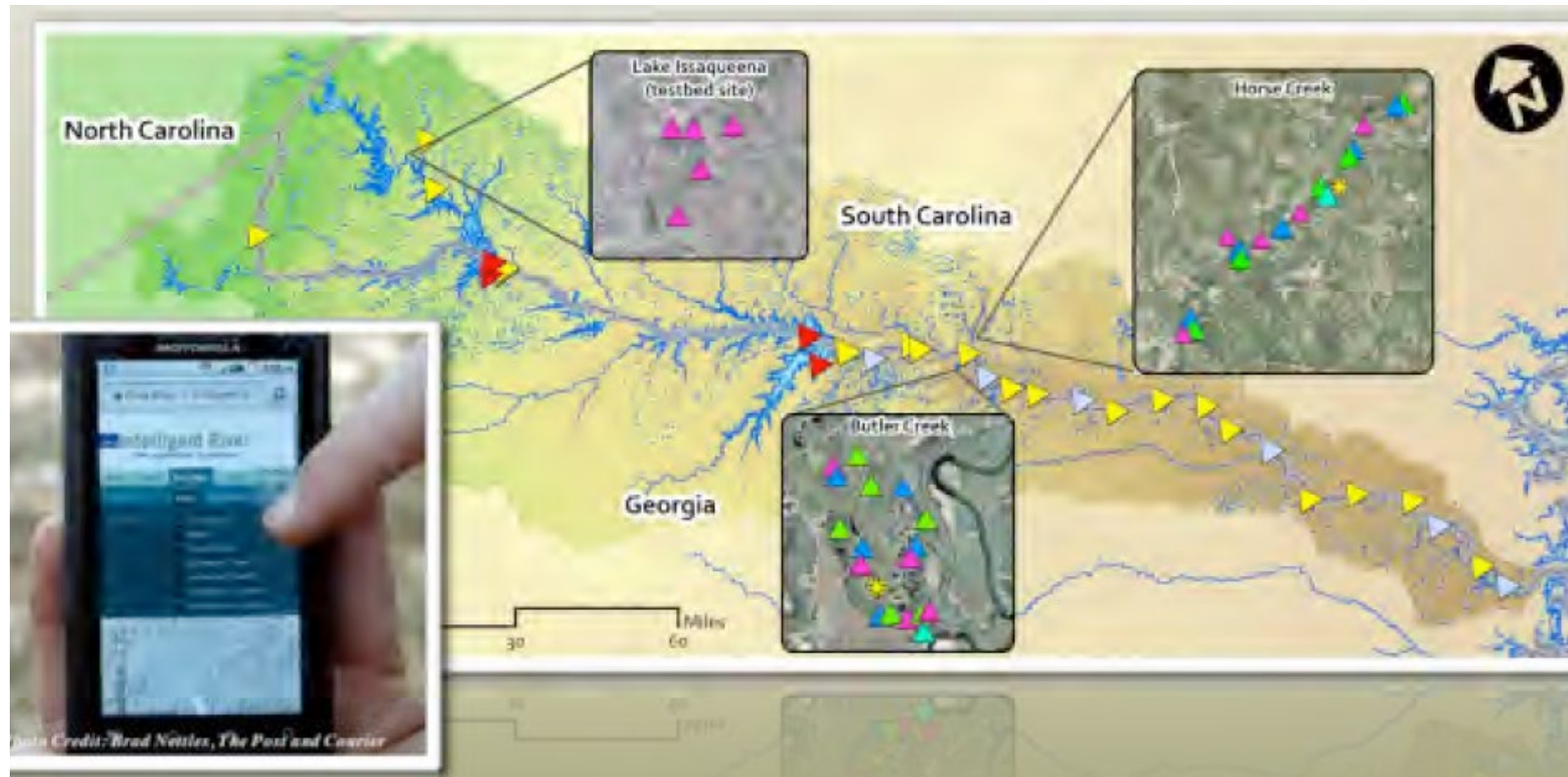
# Trail Design at Mark Twain Lake

- MOU with Western Illinois University and the FOREST Council
- Worked with Open Space Park Planning/ Landscape Construction class on needs assessment and design of multi-use trail project
- FOREST Council applied for grant \$



# Clemson Water Quality Monitoring

- Clemson University awarded \$3M by the National Science Foundation to design, develop and deploy a basin-wide network of computerized sensors that provide real-time remote data acquisition to monitor water quality along the entire length of the Savannah River.
- Partnered with the Corps to place sensors and share data.



# Boise State Kestrel Box Program

- Students at BSU build and install kestrel nest boxes, develop management plan, monitor populations, band birds





# Western Kentucky University Water Quality Work At Nolin River Lake

- Set up Interagency Personnel Agreement (OF-69) to fund water quality research by two WKU employees. No competition required. (*not to be used for students/grad students... must be a technical expert*)
- Authority: 5 USC 3374 Intergovernmental Personnel Act of 1970
- Allows temporary assignments of state, local, or tribal government, and university employees at Federal agencies
- Assignments should have mutual benefits for both organizations with sound public purpose to further the goals of the organizations
- Developed sampling/work plan to investigate harmful algal blooms and non-point source pollution
- End product: document that can be used to contract for sampling
- Led to partnership with USGS to install real time WQ monitoring stations that use remote controlled sub



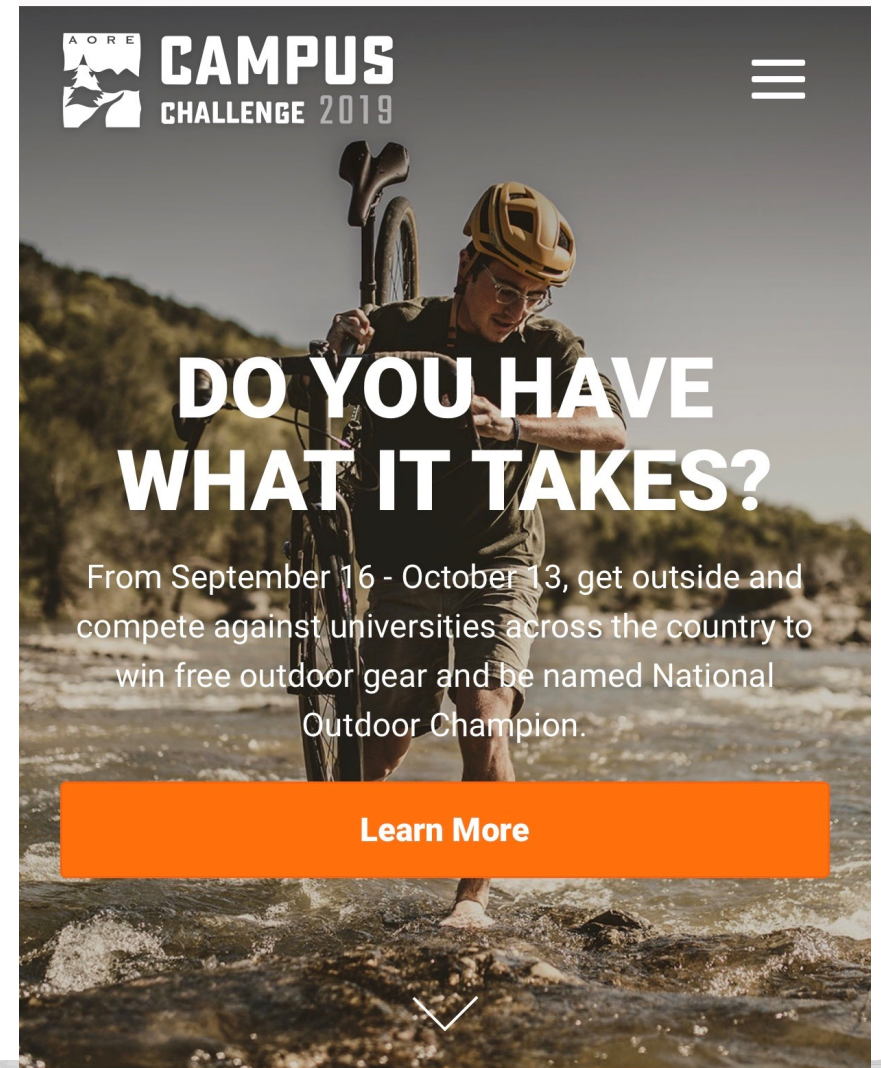
US Army Corps  
of Engineers®





# AORE National On Campus Challenge

- 4-week competition between 90 colleges in 35 states with 1.3 million students to see who can get the most people outdoors and active
- “Mother-Nature-meets-March Madness”
- Participating schools near Corps lakes:
  - Campbellsville University (KY)
  - Ouachita Baptist (AR)
  - Southern Illinois (IL)
  - University of Iowa (IA)
  - Vanderbilt (TN)
  - Miami University (OH)
  - University of Wisconsin (WI)
  - University of Massachusetts (MA)
  - University of New Hampshire (NH)
  - Lees-McCrae College (NC)
  - Hollins University (VA)
  - Bellevue College (WA)
  - Austin Peay (TN)
  - Clemson (SC)
  - Morehead State (KY)
  - California State Chico (CA)
- <http://www.oncampuschallenge.org/>





Dr. Joy James  
Appalachian State University

Let's hear some tips from an ASU professor about how to connect with your local university....



US Army Corps  
of Engineers®



# Questions?



US Army Corps  
of Engineers®



U.S. ARMY